



**Fresh year, time for a fresh trip!** From cultural reopenings to scenic walking trails and ambitious coastal rewilding projects, 2026 is set to be a landmark year for visitors to England's Coast.

It's the 400th anniversary of Scarborough becoming Britain's first seaside resort but also comic legend Eric Morecambe's 100th birthday, so expect the seaside town after which he named himself and the Yorkshire resort to celebrate in style. It's also the Jurassic Coast's 25th birthday – so there'll be a further wave of big celebrations on the south coast.

If you're planning big audacious goals or just a fresh start, [check out our new blog](#), there's a raft of new saunas if you're looking to recharge and rejuvenate, top walks for spotting winter nature and if you're trialling Veganuary for the first time, we've got a round-up of tempting dining options.

We're starting 2026 with a cracking competition, the chance to win a two-night stay for up to six people in gorgeous [Limpet Cottage](#) set in Robin Hood's Bay, one of the prettiest villages on the Yorkshire Coast. With the North York Moors right on the doorstep, it's a dream escape.

**Happy New Year!**

---



## Reach for the stars in Dorset

This is the perfect time for stargazing and Dorset is one of the best locations, it became the first National Landscape in the country to be designated in its entirety an International Dark Sky Reserve. You can spot stars just two hours after sunset in winter at around 4pm, so every member of the family can be over the moon.

As the 25th anniversary of the Jurassic Coast, if you've never been, this is the year to go. In addition to its epic coastline, you'll find castles, rolling farmland and dozens of water sports.

**Days out in Dorset**

---





## Escape to nature in Essex

With a coastline of 350 miles and hundreds of acres of nature reserves, Essex is ideal for spotting wintering birds as well as grey and common seals lounging on the mudflats of Hamford Water and Wallasea Island.

And if the sea air sharpens your appetite, take your pick of seafood and oysters at Mersea Island, Maldon for smoked fish or dine with stunning seascape views at Old Leigh, Walton-on-the-Naze or Clacton.

**Our top tips for Essex**

---



## Romantic routes in Tees Valley

Looking for a new stretch of coastline to discover this year? If you're thinking ahead to Valentines, the Tees Valley coast is too often overlooked, you'll find scores of unspoilt beaches to saunter and watch sunsets. In addition to Durham and Northumberland, feel the coast on your face at Cullercoats, Whitley Bay or Tynemouth in North Tyneside.

South Tyneside offers plenty of charm, follow the coast path for impressive views, soaring cliffs and sandy beaches like Sandhaven or Littlehaven before exploring Souter Lighthouse, the first in the world to be built for electricity. This region is full of surprises!

[Explore the North East Coast](#)

---





# WIN A 2 NIGHT STAY IN ROBIN HOOD'S BAY

ON THE YORKSHIRE COAST

## Win a two-night stay in Robin Hood's Bay on the Yorkshire coast!

Start 2026 in style with a relaxing stay in Robin Hood's Bay on the stunning coast of the **North York Moors National Park**.

With its winding alleys and fishermen's cottages, this is one of the prettiest villages on the Yorkshire coast. You'll stay in **Limpet Cottage**, a gorgeous property set on The Esplanade in the lower village of Robin Hood's Bay.

Your two-night stay is for up to six people in three bedrooms, including space for your four-legged friend. The cottage is excellently equipped and beautifully appointed across three floors, the main bedroom features a king size bed and includes an en-suite bathroom in addition to the main bathroom. The top floor boasts great views out to sea and the Ravenscar headland while outside is a pretty, terraced garden with seated patio area.

Stroll the dog-friendly beach, explore rock pools and search for fossils. As well as miles of walking trails on the Cleveland Way coast path, enjoy cycle paths and bridleways right on the doorstep plus a wide range of cafés, pubs, shops and restaurants in this historic fishing village.

**Enter Now!**

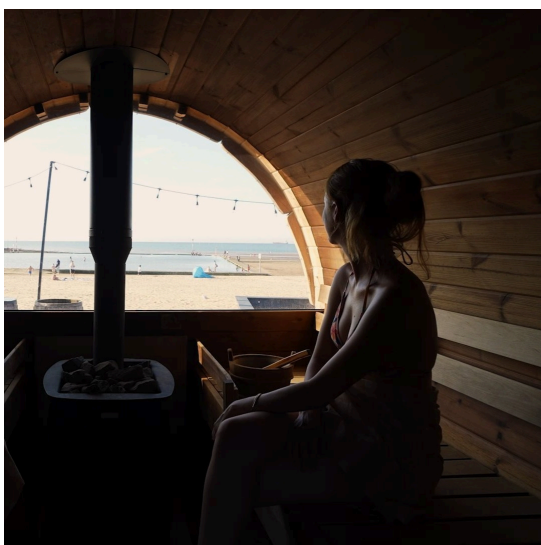
# Tell us your views on England's Coast...



## ...for the chance to win a £25 voucher

---

**Check out our latest blogs**



With the trend in seafront saunas showing no signs of slowing down, discover what's on the coast near you for a stress-busting experience plus top spots for sunsets, where to see over-wintering birds and great spas in our new focus on wellness blog

[Read Blog](#)

---





As the days lengthen, it's time to plan for spring! With migrating birds and hedgerow wildflowers, the first shoots of the season are appearing in White Cliffs Country, Kent.

Explore the best walks and cycling routes in our new blog

[Read Blog](#)

Be inspired by England's Coast

**Explore our 8 unique regions**







## England's Coast

ENGLAND'S COAST COMMUNITY INTEREST COMPANY

Registered office address: Midland House, 2 Poole Road, Bournemouth, England, BH2 5QY

This email was sent to {{ contact.EMAIL }}

You've received this email because you've subscribed to our newsletter.

[Unsubscribe](#)

